

Notification Date: May 31, 2018

Effective Date¹: Q4 2018 (more accurate date available in September 2018)

PRODUCT CHANGE NOTIFICATION

Metal Housing Improvement

Product Identification

SmartFlex, SmartMotion, SmartSwarm

Description of Change

Detailed Description of Change: For metal versions of routers only. Another screw will be added to the rear panel of the router next to the SIM card and micro SD card holders. New metal PCB spacer with extra threaded hole will be used for holding PCBs together (motherboard with cellular module board). This spacer will replace one of the current spacers and the new screw will be embedded into this spacer. See Figure 1 for more details.

Two of these extra screws and spacer replacements will be used on SmartMotion routers' rear panels, because there are two cellular module boards with the SIM card holders. See Figure 2.

Even on routers without cellular module, there will be extra screw in the rear panel because of the micro SD card holder. One extra spacer in the router's motherboard will hold the router's rear panel firm. See Figure 3.

Parts details are available on the next page below the Figures.

Reason for Change: To improve the fit of SIM card holders and micro SD card holder to the rear panel of the router. The rear panel will be firmly attached to the PCB boards and the user experience will improve when handling SIM cards and micro SD card.

Anticipated impact on Fit, Form and Function: This will improve the fit of the SIM card and micro SD card holders on the rear panel of the router. Form of the router will slightly change (one or two more screws). Function will not be affected.

Qualification Data

All these changes fulfill all internal quality requirements according to our Quality Management process and policy.

¹Proposed Date of First Changed Production Shipment

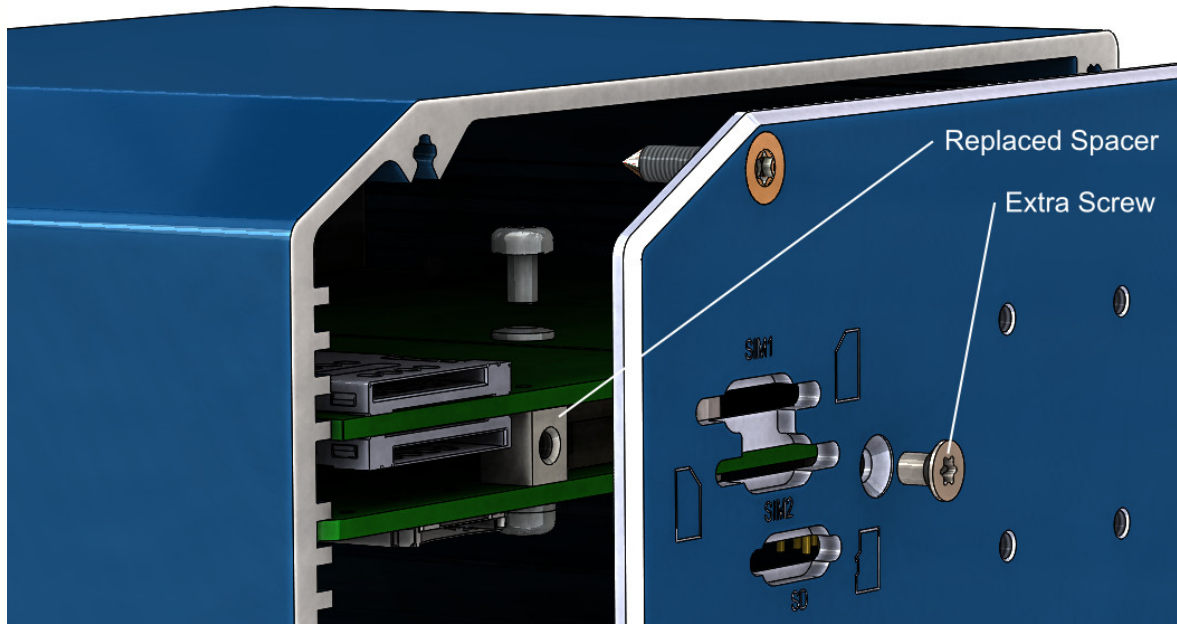


Figure 1: Assembly view – rear panel of the router (SmartFlex, SmartSwarm)



Figure 2: Two extra screws and spacer replacements on SmartMotion

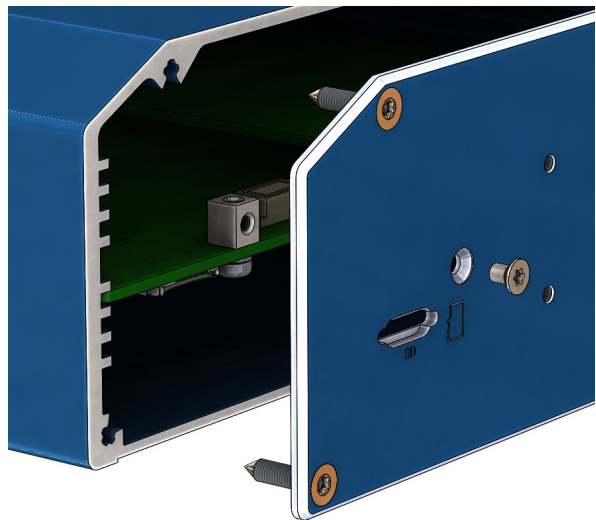


Figure 3: Extra screw and spacer on versions without cellular module

New Part

Replaced Spacer

Extra Screw

Specification

Brass nickel plated cube PCB spacer,
Wittig W-(M2.5-L6.0)5.0

M2.5 x 4, recessed head, TORX, Zn, DIN 965